

**Product Code: B7000-HH**

**For use with Sepura STP/SRG/SRH TETRA terminals**

## Product Description

The B7000-HH is a portable / hand held TETRA Data Logger for carrying out TETRA network RF coverage surveys using standard operational radio equipment. The Data Logger connects direct to a TETRA radio and records serving cell RSSI, neighbour cell RSSI, LAC code, GPS position with date and time.

The unit is powered by the radio equipment and uses the radio GPS for location. The data is recorded on an internal SD card which is capable of holding recordings over several months. Data from the B7000 HH can be viewed using the B7000 server web interface or exported for viewing in most major GIS software packages.

## Application

The Data Logger is a dedicated TETRA Network RF survey tool which can be used by experienced radio engineers and everyday operational staff to collect and monitor TETRA Network coverage information.

## Features and Benefits:

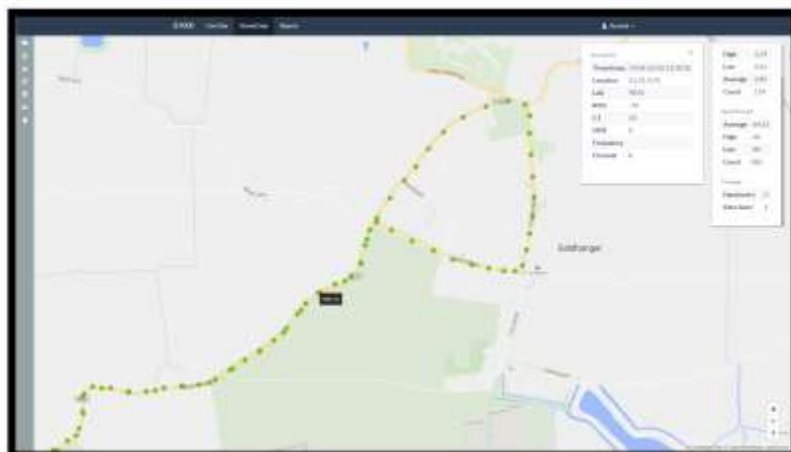
- Portable, small and lightweight
- Rapidly deployable low cost survey tool
- Can be used by professional engineers and day to day operational staff
- Connects to the PEI port of the radio with a purpose made BiTEA cable
- The unit is powered by the radio
- SD Data Card
- Very easy to use with a visual status indicator

Radios not included



## Data recorded:

- ✓ Serving cell RSSI
- ✓ Neighbour cell RSSI
- ✓ LAC codes
- ✓ Terminal ISSI
- ✓ GPS position
- ✓ Date and time
- ✓ Unique file ID
- ✓ Handover points
- ✓ MCCH and TCH frequency



*Mock map for illustration purpose only.  
Typical map produced from the  
Data Logger when analysed by the  
BiTEA B7000-Lite Data Analyser Software*

© OpenMapTiles © OpenStreetMap contributors

# B7000-HH TECHNICAL INFORMATION

<b>SIZE AND WEIGHT</b>	
Size:	120mm W x 80mm H x 25mm D
Weight:	120 grams
<b>CONNECTION</b>	15 way HD D connector on B7000 HH Data Logger for the radio terminal interface cables – see list below
<b>INTERFACE CABLES</b>	BiTEA SP1 cable connects to Sepura SRH3900 BiTEA SP7 cable connects to Sepura STP8000/9000 BiTEA SP8 cable connects to Sepura SRG3900 BiTEA SP9 Programming/Data Download cable
<b>INDICATOR</b>	LED status indicator
<b>DATA CARD</b>	Fitted with micro SD card